

EMISSIONS INVENTORY OF POLYBROMINATED DIPHENYL ETHERS (PBDEs) ON A HOMOLOGUE BASIS

Sakai S¹, Hirai Y¹, Ninomiya T¹, Aizawa H^{1,2}, Nakano T², Muroishi Y²

¹ Kyoto University, Environment Preservation Center, Yoshidahon-machi, Sakyo-ku, Kyoto 606-8501, Japan;

² Ministry of Environment, Japan

Introduction

Emissions of Polybrominated Diphenyl Ethers (PBDEs), a class of brominated flame retardants, into the environment were estimated over their entire life cycle, from their production and use to their recycling and waste management, in order to provide information for their risk control. A previous estimated inventory focused only on deca-brominated diphenyl ether (DBDE)¹⁾. The present aims to estimate mono- to deca-brominated diphenyl ether homologues.

Materials and Methods

To estimate the material flow of PBDEs in Japan, we set the emission factor and the level of activity at each stage of their life cycle and estimated their emission inventory. In this study, the following processes were considered: the manufacture of flame retardants²⁾, the processing of flame-retardant resins³⁾, the processing of flame-retardant fiber⁴⁾, the use of final products containing PBDEs (primarily home electric appliances)⁵⁻⁷⁾, the dismantling and crushing of home electric appliances^{3, 8)}, RDF (Refuse Derived Fuel) molding⁵⁾, the crushing of bulky electrical waste⁹⁾, incineration¹⁰⁾, gasification¹⁰⁾, the melting of automotive shredder residue (ASR)⁹⁾, and open uncontrolled combustion¹¹⁾. Emission factors were estimated from the monitoring data for individual sources, if any were available. If no actual monitoring data was available, default values used in previous risk assessments were applied¹²⁻¹⁵⁾.

Results and Discussion

Table 1 shows the emission factors of PBDEs on a homologue basis at each stage of their life cycle, and Figure 1 shows the distribution of PBDE homologues in emissions from each source. The distribution of the homologues reveals TeBDEs, lower-brominated DEs, in the dismantling and crushing of home appliances for recycling. Since lower-brominated DEs have been used as flame retardants in Japan in the past, it is conceivable that waste products containing lower-brominated DEs are now in the recycling process. It can be seen from the distribution of homologues in open burning that OcBDEs are dominant. In contrast, DeBDE is dominant in all homologue distributions for other emission factors in the product life cycle.

Table 2 shows the maximum, minimum, and representative emission factors associated with each PBDE, the activity levels, and the resulting estimated release into the environment, at each stage in the product life cycle. Atmospheric emissions of PBDEs were estimated to be about 780 kg/year. Their emission from open burning accounts for about 90% of the total emission. Excluding open-burning emissions, atmospheric emissions were

Brominated Compounds - Sources and environmental levels

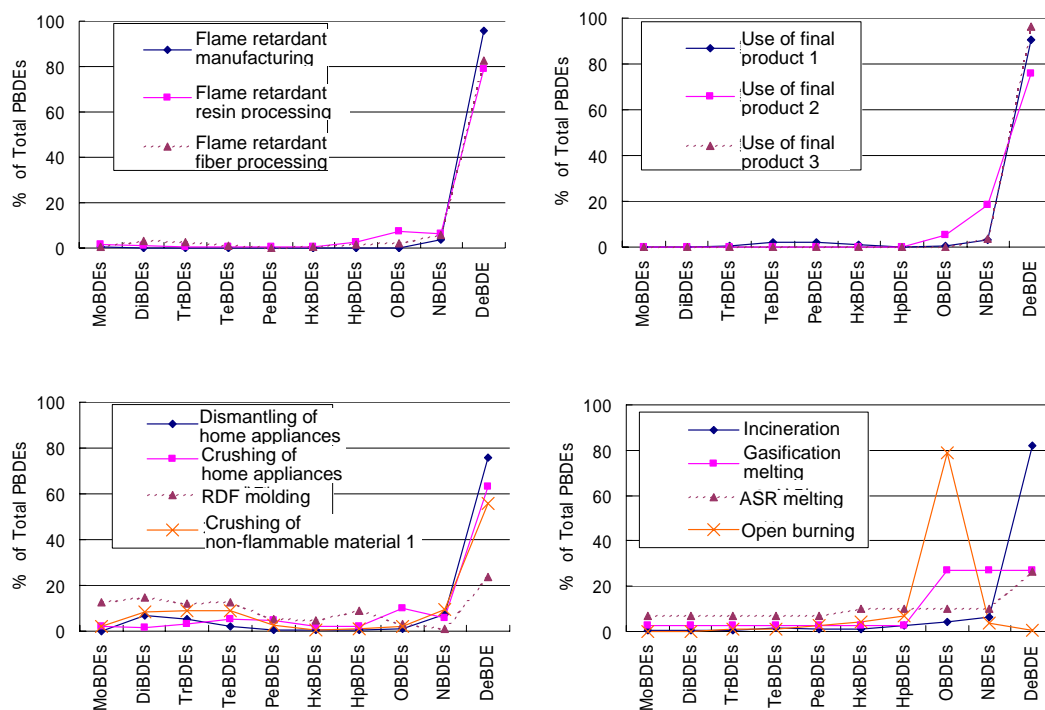


Figure 1. Distribution of homologues for the respective life-cycle stages

Table 1. Atmospheric emission inventory of PBDEs

Process	Emission Factor (g/g-DBDE)												Range ^{*4} (g/g-DBDE)	
	MoBDEs	DiBDEs	TriBDEs	TeBDEs	PeBDEs	HxBDEs	HpBDEs	OBDEs	NoBDEs	DeBDE	PBDEs	min	max	
DBDE Production	3.4E-07	5.4E-08	8.7E-09	1.5E-09	3.0E-10	4.6E-11	2.6E-11	1.1E-07	2.4E-06	6.7E-05	7.0E-05	-	-	
Flame Retarded Fabric Processing (Air)	4.0E-09	2.9E-08	2.4E-08	8.6E-09	2.1E-09	4.9E-09	1.3E-08	2.0E-08	5.0E-08	7.5E-07	9.1E-07	-	-	
Flame Retarded Fabric Processing (Water)	3.3E-12	8.5E-08	6.4E-08	2.6E-09	1.5E-09	1.5E-08	1.4E-07	2.8E-06	5.6E-05	1.0E-02	1.0E-02	-	-	
Flame Retarded Resin Processing	1.2E-09	8.7E-10	5.0E-10	2.6E-10	3.4E-10	5.1E-10	1.8E-09	4.9E-09	4.2E-09	5.4E-08	6.8E-08	2.7E-09	1.8E-07	
Use of Final Products ^{*1}	-	8.4E-11	1.4E-09	9.3E-09	1.2E-08	5.3E-09	8.0E-10	2.9E-09	1.6E-08	4.4E-07	4.9E-07	1.4E-07	6.4E-07	
Open Fire ^{*2}	6.2E-05	2.0E-04	1.1E-03	1.2E-03	2.5E-03	4.0E-03	6.5E-03	7.4E-02	3.5E-03	5.0E-04	9.1E-02	-	-	
Dismantling & Crushing of TVs	4.3E-11	1.8E-09	1.6E-09	1.3E-09	6.4E-10	5.5E-10	4.5E-10	1.1E-09	1.1E-08	1.1E-07	1.3E-07	1.0E-08	4.5E-06	
Crushing of Bulky Waste	4.0E-09	5.9E-09	2.6E-09	3.6E-09	1.8E-09	5.6E-09	1.5E-08	1.6E-08	4.5E-08	5.2E-07	7.2E-07	2.5E-07	2.1E-06	
Material Recycling ^{*3}	1.2E-09	8.7E-10	5.0E-10	2.6E-10	3.4E-10	5.1E-10	1.8E-09	4.9E-09	4.2E-09	5.4E-08	6.8E-08	2.7E-09	1.8E-07	
Incineration	-	1.2E-08	1.8E-08	3.2E-08	2.4E-08	2.0E-08	3.4E-08	2.8E-08	8.7E-08	1.4E-06	1.7E-06	1.4E-07	1.5E-05	
ASR Melting	-	-	-	-	-	-	-	-	-	-	5.7E-08	-	-	
Open Burning	6.2E-05	2.0E-04	1.1E-03	1.2E-03	2.5E-03	4.0E-03	6.5E-03	7.4E-02	3.5E-03	5.0E-04	9.1E-02	-	-	

*1: Emission factors corresponding to product use are expressed as g/(g-DBDE·year)

*2: Same emission factors as open burning

*3: Same emission factors as flame-retarded resin

*4: Maximum and minimum of PBDE emission factors

estimated to be between 90 and 157 kg/year, and the atmospheric emissions of PBDEs were the highest in the manufacture of flame retardants, followed by the use of the final products containing PBDEs.

The activity level for open burning was set as follows. Assuming the life of products containing PBDEs is 10 years, about 5,000 tons of the DeBDE produced in Japan over the past 10 years would have been disposed of by

Brominated Compounds - Sources and environmental levels

Table 2. Atmospheric emission factors, activity levels, and emissions (kg/y)

Process	Emission Factors (g-PBDEs/g-DBDE)			Activity	Total PBDEs		
	Rep.	min	max		Rep.	min	max
DBDE Production	7.0E-05	-	-	1,030 ton/year	72	-	-
Flame Retarded Fabric Processing (Air)	9.1E-07	-	-	600 ton/year	0.54	-	-
Flame Retarded Resin Processing	6.8E-08	2.7E-09	1.8E-07	1,400 ton/year	0.095	0.0038	0.25
Use of Final Products*1	4.9E-07	1.4E-07	6.4E-07	33,000 ton/year	16	4.6	21
Open Fire*2	9.1E-02	-	-	7 ton/year	640	-	-
Dismantle and Crusshing of TVs	1.3E-07	1.0E-08	4.5E-06	770 ton/year	0.10	0.0077	3.5
Crushing of Bulky Waste	7.2E-07	2.5E-07	2.1E-06	3,320 ton/year	2.4	0.82	7.0
Material Recycling*3	6.8E-08	2.7E-09	1.8E-07	100 ton/year	0.0068	0.00027	0.018
Incineration	1.7E-06	1.4E-07	1.5E-05	2,300 ton/year	4.0	0.32	35
ASR Melting	5.7E-08	-	-	140 ton/year	0.0080	-	-
Open Burning	9.1E-02	-	-	0.5 ton/year	46	-	-
Total					781		

*1 : Emission factors corresponding to product use are expressed as g/(g-DBDE · year)

*2 : Same emission factors as open burning

*3 : Same emission factors as flame-retardant resin

*4 : Maximum and minimum of PBDE emission factors

now. If the proportion of this DeBDE disposed of by open burning is taken to be the same as the proportion of total municipal solid waste (51.61 M tons in 2003) disposed of by self-disposal (170,000 tons)¹⁶⁾ multiplied by the concentration of DeBDE in municipal solid waste (3,000 ng-DeBDE/g-waste), then the annual inflow of DeBDE into open burning would amount to about 500 kg. However, since self-disposal of municipal waste includes compost from kitchen organic waste, the actual outdoor incineration rate is probably not as high as this. Therefore, 500 kg of DeBDE incinerated in the open air was set as the maximum. Open fires can be thought of as uncontrolled combustion as well as open burning. According to the Fire and Disaster Management Agency¹⁷⁾, the total floor area burnt out by fires in Japan in 2004 was 1.574 million m². The total floor space in buildings in Japan has been assumed to be 7 billion m²¹⁸⁾, which would mean that the burnt ratio can be calculated to be 0.02% annually. When this ratio is multiplied by the total DeBDE stock of 33,000 tons, the amount of DeBDE burnt out is 7 tons/year. Alternatively, if the waste per unit area of floor space is taken as 1 ton/m² and the DeBDE concentration in the waste is 3,000 ng-DeBDE/g-waste, as it is for bulky electrical waste, the amount of DeBDE burnt out by fires would amount to about 5 tons/year. To obtain the emission factor for PBDEs in the open-burning process, the results of the study conducted by Hirai were applied¹¹⁾. In that study, an uncontrolled-combustion experiment was conducted on the supposition of an open-burning process. The atmospheric emission factor corresponding to the input of PBDEs was 9.1×10^{-2} . However, it is anticipated that these values will vary significantly depending on the setting for the concentration of PBDEs in the waste. For the estimated range of PBDEs emissions, the processes of incineration and gasification gave rise to a wide range of values corresponding to the extended range of the activity levels; this also applied to the processing of flame-retardant resin and the crushing of home electric appliances and nonflammable products. Since open burning has a high emission factor, a small difference in the activity level has a high impact on the emission of PBDEs. Furthermore, the release into water media from the processing of flame-retardant fabric was estimated

to be 6,000 kg/year more than the corresponding air emissions. Therefore it is conjectured that the one of the major sources of DeBDE in rivers and coastal areas is derived from the release of wastewater from flame-retardant fabric processing plants. The emissions from these processes in the life cycle of DeBDE require further study.

References

- 1) Sakai, S., Hirai, Y., Aizawa, H., Ota, S., Muroishi, Y.: Emission inventory of deca-brominated diphenyl ether (DBDE) in Japan, *J Mater Cycles Waste Manag* (2006) 8:56–62
- 2) European Commission (1993): Techno-economic study on the reduction of industrial emissions to air, discharges to water, and the generation of wastes from the production, processing, and destruction (by incineration) of brominated flame retardants: final report: document
- 3) The Ministry of the Environment, Japan (2003): Report on the survey of PBDD/DFs emissions in FY 2002. (in Japanese) <http://www.env.go.jp/air/report/h15-06/index.html> (accessed on 20 Oct. 2005)
- 4) The Ministry of the Environment, Japan (2005): Report on the survey of PBDD/DFs emissions in FY 2003. (in Japanese) <http://www.env.go.jp/air/report/h16-12/index.html> (accessed on 20 Oct. 2005)
- 5) Tamade Y, Shibakawa S, Osaki H, Kashimoto S, Yagi Y, Sakai S, Takasuga T (2002) *Organohalogen Compounds*, 56:189–192
- 6) EU TGD (1996) Technical Guidance Document in support of Commission Directive 93/67/EEC on Risk Assessment for new notified substances, Commission Regulation (EC) No 1488/94 on Risk Assessment for existing substances and Directive 98/8/EC of the European Parliament and of the Council concerning the placing of biocidal products on the market. (Part II, Chapter 3, Appendix I) <http://ecb.jrc.it/Technical-Guidance-Document/>
- 7) Breivik, K.; Sweetman, A.; Pacyna, J. M.; Jones, K. C. (2002): Towards a global historical emission inventory for selected PCB congeners -- a mass balance approach; 2. Emissions. *The Science of The Total Environment* 290(1-3), 199–224
- 8) National Institute for Environmental Studies: Reduction measures of polybrominated dioxins, Report for Ministry of the Environment, Japan (2005)
- 9) Japan Waste Research Foundation (2005): Studies on the behavior and control of polychlorinated dibenzo-p-dioxins and related compounds in the waste management processes (in Japanese)
- 10) Japan Waste Research Foundation (2001): Study on the behavior and control of polychlorinated dibenzo-p-dioxins and its relative compounds in the waste treatment processes. (in Japanese)
- 11) Hirai, Y., Kida, A., Sakai, S.: Emission factors for polychlorinated dibenzo-p-dioxins, dibenzofurans and polybrominated diphenyl ethers estimated from landfill fire simulation, *Chemosphere*, submitted
- 12) Danish Environmental Protection Agency (1999): Brominated Flame Retardants: Substance flow analysis and assessment of alternatives.
- 13) Palm, A; Cousins, IT; Mackay, D; Tysklind, M; Metcalfe, C; Alaee, M (2002): Assessing the environmental fate of chemicals of emerging concern: a case study of the polybrominated diphenyl ethers. *Environmental Pollution* 117(2), 195–213
- 14) Alcock, RE; Sweetman, AJ; Prevedouros, K; Jones, KC (2003): Understanding levels and trends of BDE-47 in the UK and North America: an assessment of principal reservoirs and source inputs. *Environment International* 29(6), 691–698
- 15) Prevedouros, K.; Jones, K.C.; Sweetman, A.J. (2004): Estimation of the Production, Consumption, and Atmospheric Emissions of Pentabrominated Diphenyl Ether in Europe between 1970 and 2000. *Environmental Science and Technology* 38(12), 3224–3231
- 16) Ministry of the Environment, http://www.env.go.jp/recycle/waste/ippan/ippan_h15.pdf
- 17) Fire and Disaster Management Agency Japan (June 28, 2005): Outline of Fire in 2004. (in Japanese) <http://www.fdma.go.jp/neuter/topics/houdou/050628.pdf>
- 18) Ministry of the Environment, Japan (2002): White paper on material cycles society.